

Marine Operations



Survey Vessels – Aquatera can mobilise a wide variety of locally-based and other survey vessels to undertake coastal and offshore surveying. This includes geological, biological and hydrographic surveying, as well as ROV deployment.



Tugs – Aquatera has excellent relations with Orkney Towing, which operates three tugs locally in Orkney. Through its colleague Captain Taylor, Aquatera has experience of tug boat operations around the world. This expertise can be used to help find the right tugboat solution to suit client needs.



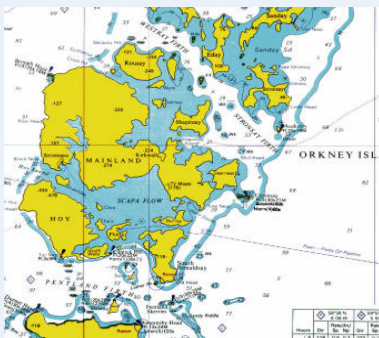
Work Boats – These provide an array of facilities and configurations for supporting marine activities. Whether it is one small work boat or a small flotilla, Aquatera, along with its maritime collaborators, can source the right vessels to suit client needs.



Deployment Barges – Aquatera can arrange access to a range of specialist barges that can be utilised for floating out large scale devices and associated equipment. Aquatera is happy to discuss client needs and outline which barges and approaches to transport would be most appropriate.



Marine Operations Supervision – Getting the right vessels is part of the success for a project, the other part in making sure they do the right things. The marine superintendent/client representative is a key person in this regard. They co-ordinate activities and provide a focal point for overall decisions about how to undertake work activities, working closely alongside the vessel skippers who retain ultimate responsibility for their vessels.



Marine Works Planning – Good implementation requires good planning and Aquatera's team of specialists has a wealth of experience of planning maritime operations. It has particular expertise in and in particular in working in harsh environments, such as tidal streams and exposed coastlines. Key activities include: site selection, route planning, scheduling, developing method statements, tows, anchoring, jacking-up, load planning and lift planning.